

EMex 2012

The BSSM's Exhibition of Experimental Mechanics

Thursday 30th August 2012

University of Glasgow



EMex12

Exhibition of Experimental Mechanics

The BSSM's Exhibition of Experimental Mechanics (EMex) will take place on Thursday 30th August 2012 as part of the Institute of Physics Modern Practice in Stress and Vibration Analysis Conference (MPSVA).

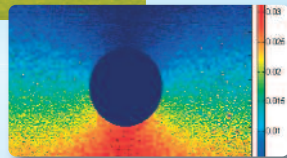
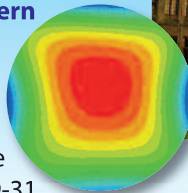
MPSVA2012 will be held at the University of Glasgow from 29-31 August 2012. Further details can be found at <http://mpsva2012.iopconfs.org>.

EMex12

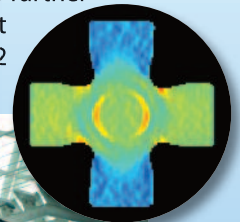
EMex12 is the premier UK exhibition for manufacturers and suppliers of strain measurement and stress analysis equipment. The 2012 exhibition will take place on Thursday 30th August 2012 at the University of Glasgow.

Exhibition opening times and registration

The exhibition is open from 10:00 to 16:00 on 30th August 2012 and will be advertised widely. Visitors, including over 70 delegates, will attend throughout the day. Refreshments for the conference will be served in the exhibition area.



To book an exhibition place please complete and return the form on page 4 as soon as possible. For further information please visit www.bssm.org/emex12



Exhibition Programme

Thursday 30th August 2012

- 8:00** Exhibition setup commences
- 10:00** Exhibition opens
- 13:00** Buffet lunch served in the exhibition hall
- 16:00** Exhibition ends
- 17:30** Stand breakdown completed



Exhibitor Information

EMex will take place in the Wolfson Medical School Building

Exhibition publicity

The BSSM is embarking on an extensive marketing campaign to ensure that the exhibition is busy with visitors other than the conference delegates. Please provide details of your company's activities on the exhibitor booking form so that these can be included in the advance publicity material for the exhibition.



What is provided

Exhibitors will be provided with an exhibition area, one table, two chairs and access to power points.

Exhibitors must ensure that any equipment being brought onto the premises has a PAT certificate. Posters should not be fixed to the walls.

Registration

Registration for exhibitors will take place in the exhibition area during set up times.

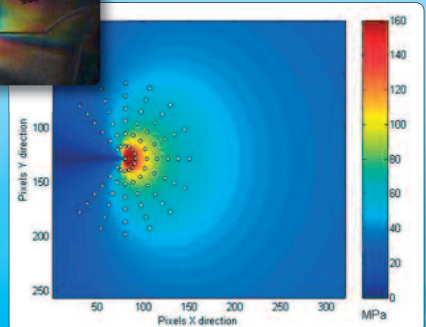
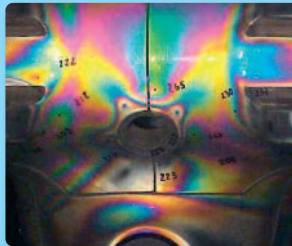
Set up and close down times

Exhibitors can set up their stands between 08.00 and 10.00 on the morning of Thursday 30th August. Stand break down between 16.00 and 17.30 on Thursday 30th August. Please note there is no facility to set up the day before the exhibition.

Security

Exhibitors are requested to ensure they have adequate insurance cover.

Belongings are brought onto the premises at the owner's own risk. Please note the area in which the exhibition will take place is unsuitable for locking at any time during the day.



Contact details

BSSM Contact

Biana Gale bianagale@bssm.org Tel: +44 (0)1525 712779

Conference Information <http://mpsva2012.iopconfs.org>

Exhibition Information www.bssm.org/emex12



Travelling to the University of Glasgow

The conference will be held in the Boyd Orr lecture theatre and Wolfson Medical School. University of Glasgow, Glasgow G12 8QQ, UK +44 (0) 141 330 2000 www.gla.ac.uk

By Air

Glasgow Airport is home to around 30 airlines flying to around 90 destinations worldwide. It is around 7 miles from Glasgow. For more details, go to www.glasgowairport.com

Prestwick Airport is 32 miles from Glasgow and is serviced by trains, buses or taxis to Glasgow. For more details go to www.gpia.co.uk/AirportInfo/default.asp

By Rail

There is a fast intercity rail service which operates from many of the major towns in England, and a sleeper service from London to Glasgow.

East Coast - www.eastcoast.co.uk

Virgin Trains - www.virgintrains.co.uk

National Rail Enquiries - www.nationalrail.co.uk

First Scotrail - www.scotrail.co.uk/index.php

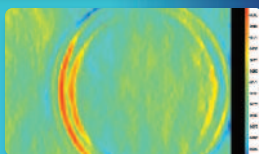
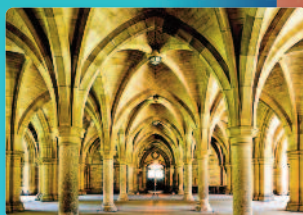
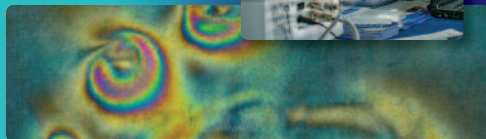
The Trainline - www.thetrainline.com/buytickets

Car Parking

P Exhibitors will be able to park temporarily outside the exhibition building in order to load and unload, after which they will be directed to a car park within the university.

Exhibitor equipment

Exhibition equipment can be sent in advance. Please mark "EMex at MPSVA conference" and address for the attention of the Janitor, Wolfson Medical School Building, University Avenue, Glasgow G12 8QQ.



For accommodation information please visit <http://mpsva2012.iopconfs.org>

Exhibitor Registration Form

Please complete, photocopy and return to: Biana Gale, BSSM, PO Box 839, Flitwick, Bedford, MK45 9DU . Tel: +44 (0) 1525 712779 e-mail: bianagale@bssm.org

Exhibitor's Name: *(This should be the principal contact for all exhibition material)*

Company/University:

Further exhibitor/guest's name:

Address:

Postcode:

Tel: e-mail:

Exhibitor activities/company products: *(This information will be included in all publicity material)*

Exhibition fees Thursday 30th August 2012 (Plus VAT)

BSSM corporate 1 member £240

Non member £470

BSSM corporate 2 member £370

To find out about BSSM membership
please visit www.bssm.org/membership

Social events

For further details and to book a place please visit <http://mpsva2012.iopconfs.org>

Payment by cheque, credit/debit card (not AMEX) or invoice

Please make cheques payable to British Society for Strain Measurement;
for payments by invoice please quote a purchase order reference number.

Please invoice: Purchase order reference:

Card No:

Start date: / Expiry date: / Issue No. (Switch/Maestro only):

Security code (last three digits on back of card):